

Temperate Timber: Romanian risks

DAVID GEHL, ENVIRONMENTAL INVESTIGATION AGENCY (EIA)

WASHINGTON D.C., OCTOBER 24, 2018



Environmental Investigation Agency

NGO with offices in D.C. and London committed to addressing the drivers of environmental crime

Campaigns:

- Illegal wildlife trade
- illegal deforestation
- atmospheric chemicals

Worked together with U.S. industry and lawmakers to pass Lacey Act - key legislation that combats illegal logging – just celebrated 10 yrs

Find technological solutions to create legal and sustainable timber trade

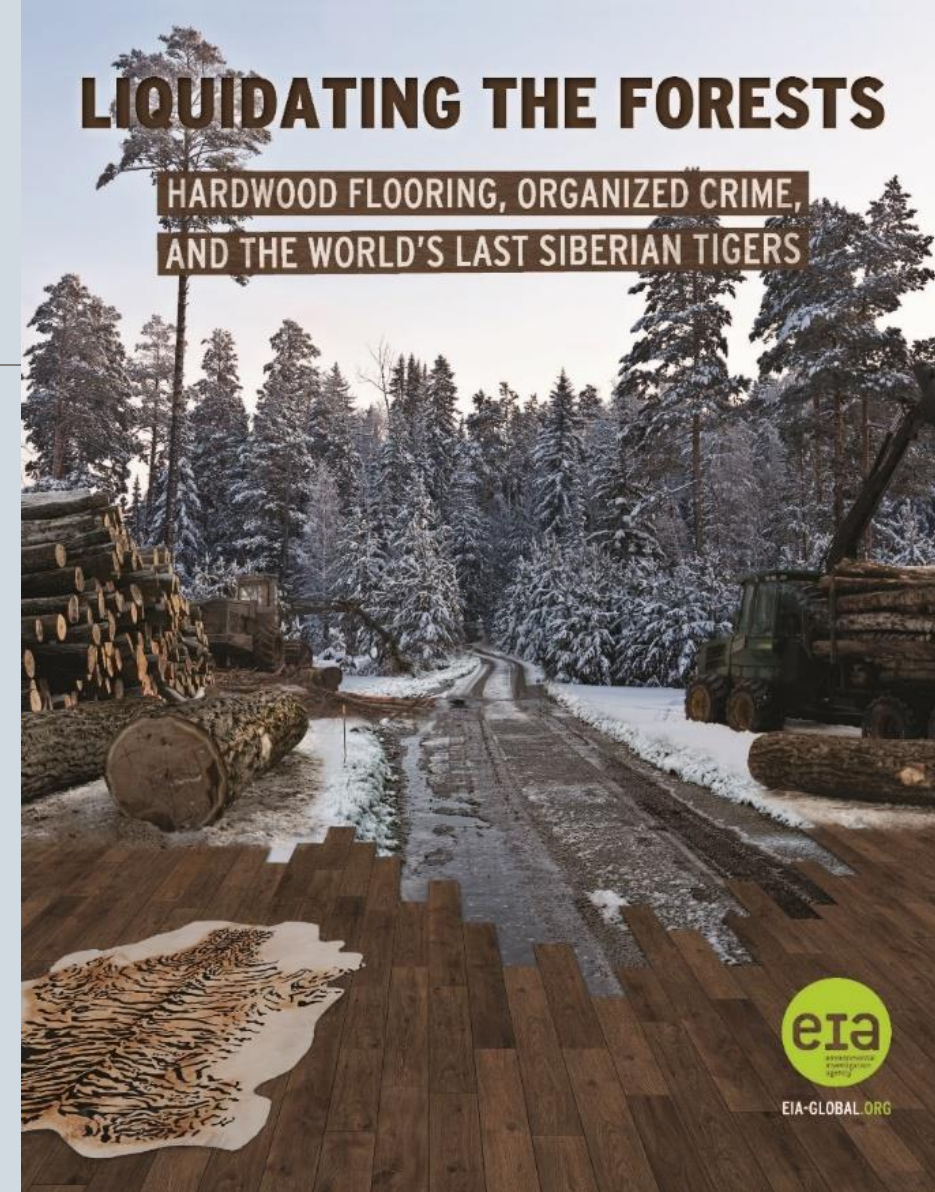


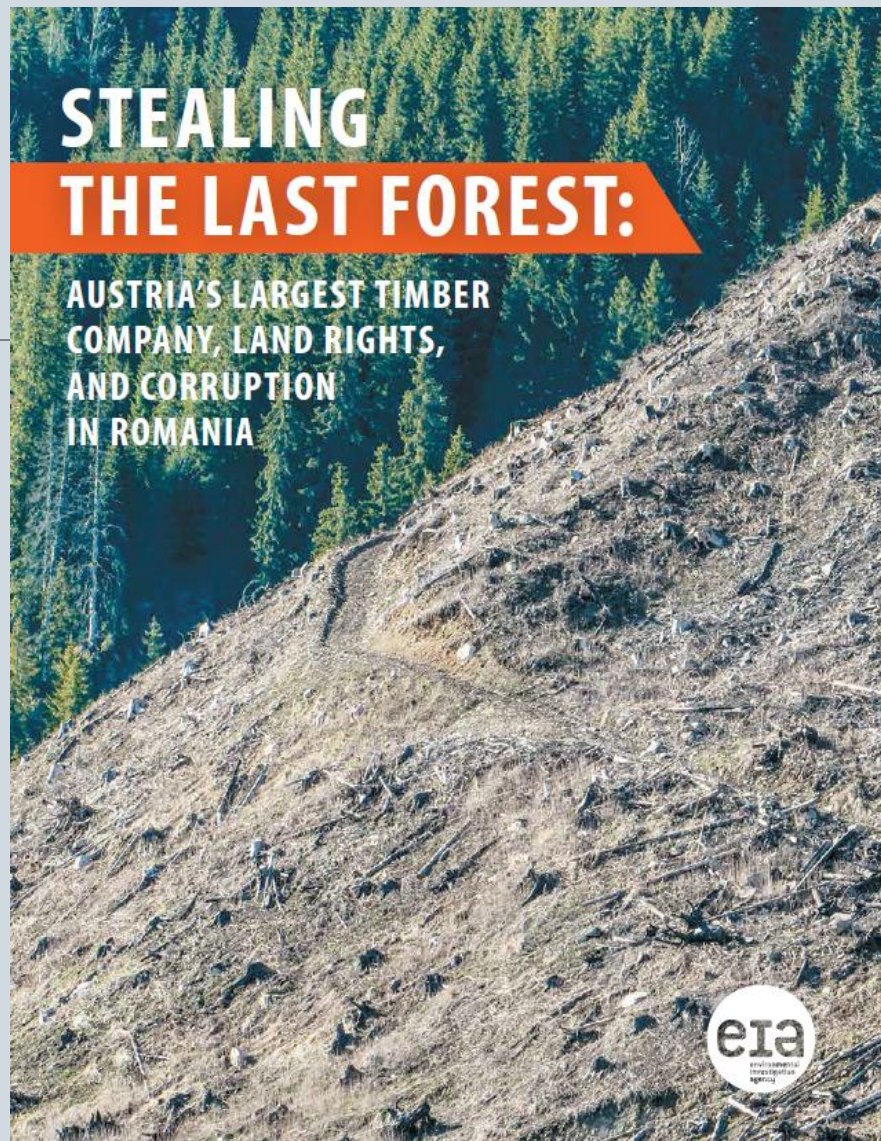
Illegal logging in temperate forests

- Much international attention focused on tropical forests
- But, serious legality and sustainability concerns regarding timber from Eastern Europe and Russia
- Impacts: degradation of forests, contributes to global climate change, biodiversity loss, and destruction of livelihoods for forest-dependent communities.
- Undermines economic development by depriving responsible companies of profits and robbing governments of more than 10 billion USD in revenue.

Russia – China - US

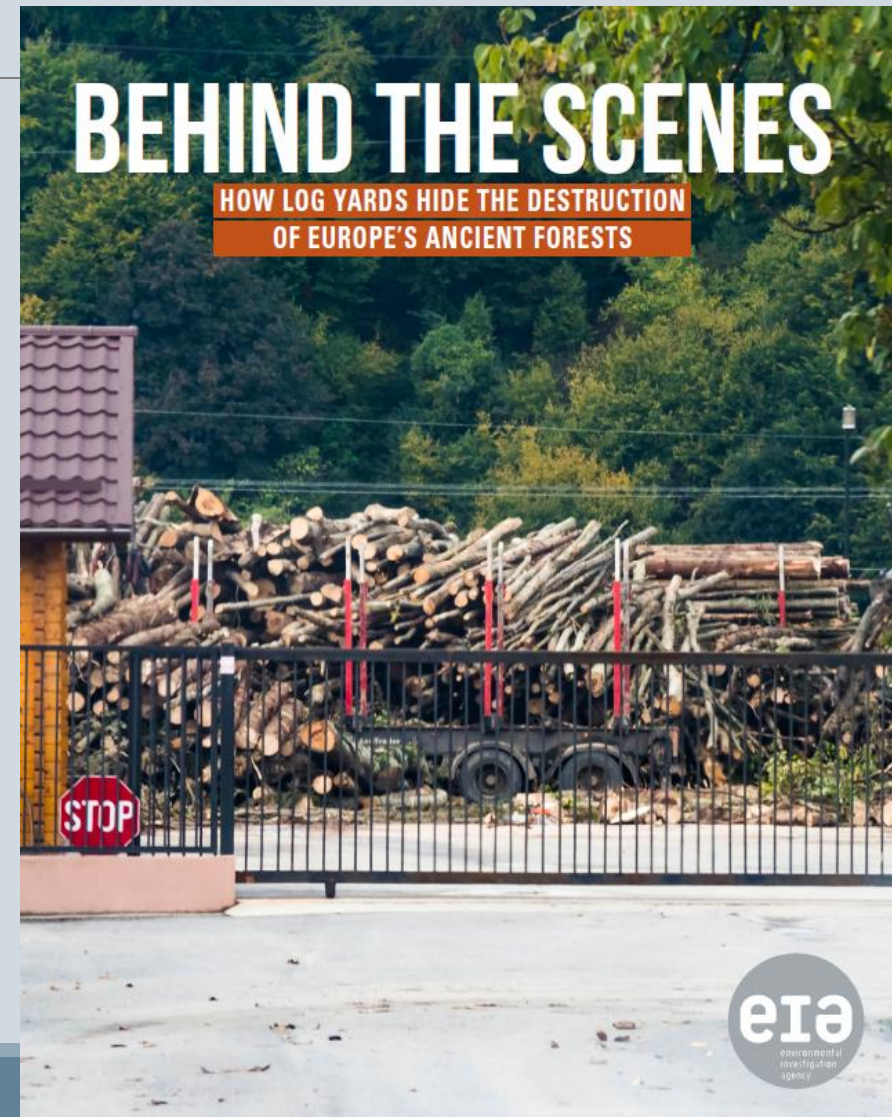
- EIA 2013 investigation into Russia-China-US supply chains
- Found very high levels of illegal harvesting in Siberia (scots pine, larch) and Far East (oak, ash)
- Very high volumes of exports from Russia to China – and increasing
- Less attention from international public – tough environment for NGOs in Russia and China





EIA 2015

EIA 2018



Why Romania?

- around half of all Old Growth Forests in Europe (not counting Russia and Scandinavia)
- rich biodiversity – bears, wolves, lynx
- serious and complex problems in forests management
- strong impacts on forest-dependent communities
- EU member



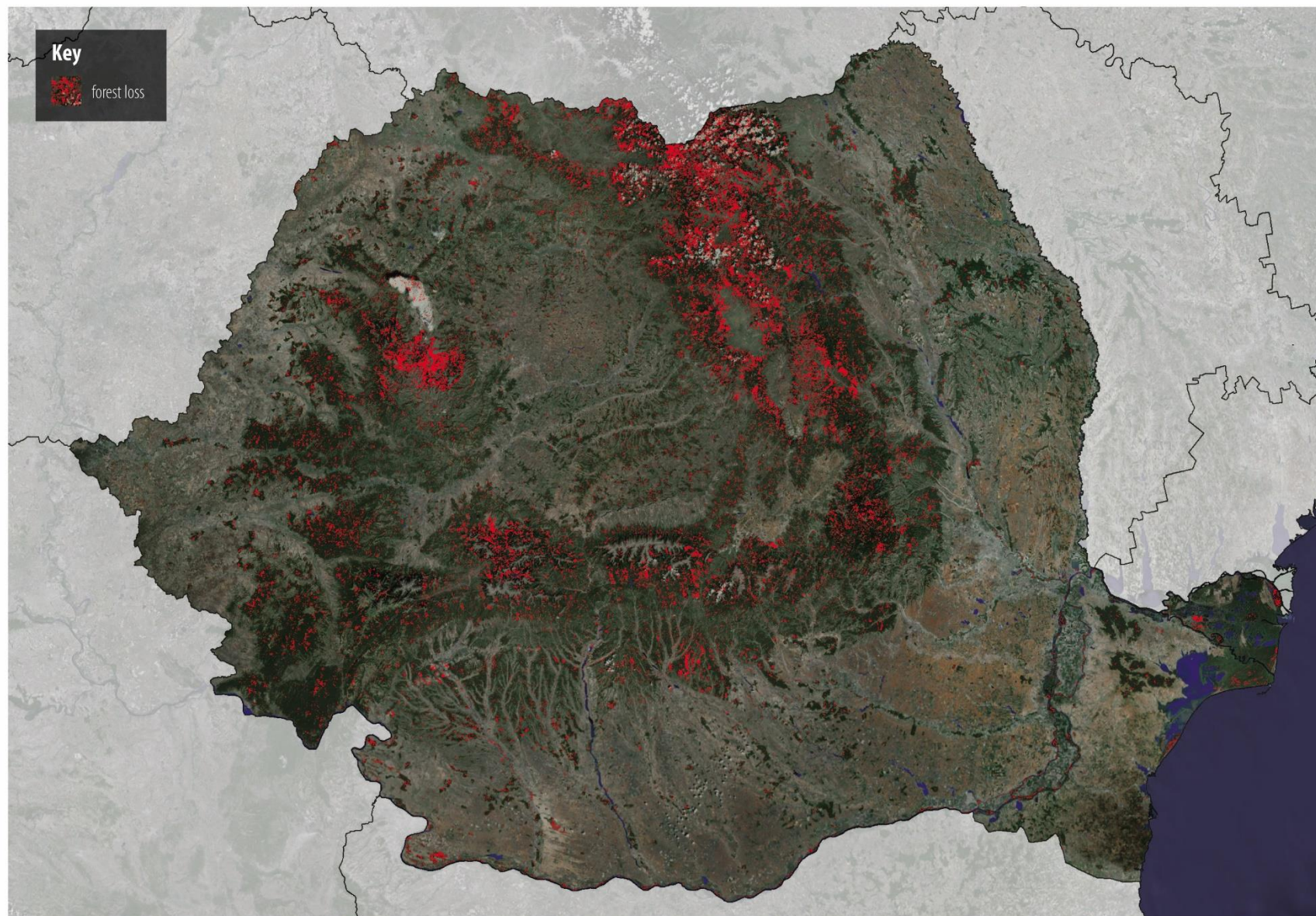
Photo: László Potozky

Illegal logging in Romania

- Abuse of sanitary, accidental permits; overcutting
- Land ownership: troubled restitution process in post-Communist era
- Illegal timber laundered through false transports



FOREST LOSS IN ROMANIA 2000-2014



Sources: calculation by Greenpeace Romania; Corine Land Mapping Lab on the basis of Global Forest Change 2000–2014; data provided by Department of Geographical Sciences, University of Maryland, Hansen et al. 2014, adapted by Greenpeace Romania, Corine Land Cover 2006, www.gadm.org



Product Types

Lumber



Edge-Glued Panels

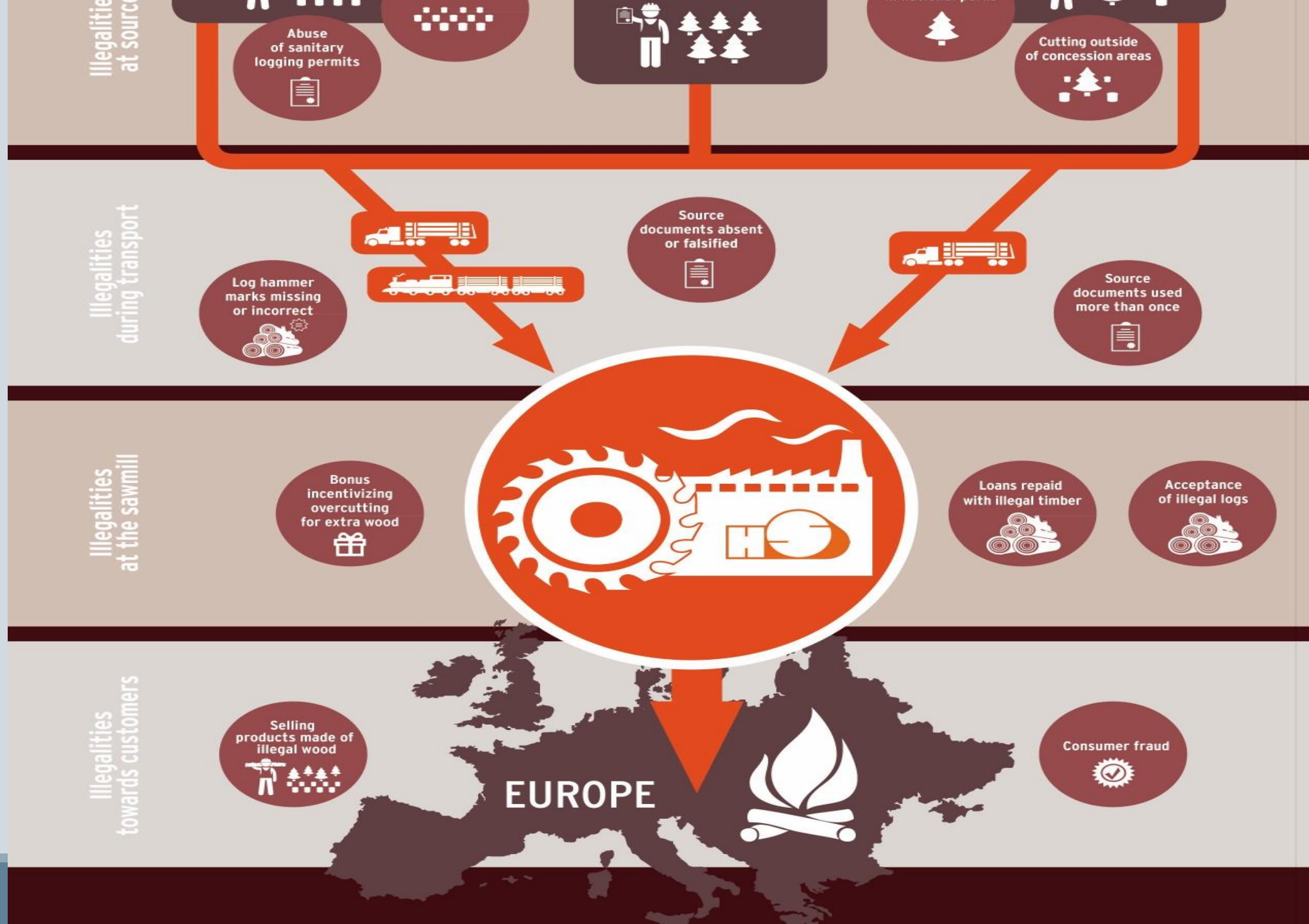


Edge-Glued Rounds



Pellets







So, actually if we want to run in full and only with domestic wood, there is no place for others.

SCHWEIGHOFER'S MAJOR CUSTOMERS ACROSS EUROPE

	United Kingdom	€0.2 M
	GA Imports Ltd	€140,000
	Stairways Midlands LTD	€20,000

	Spain	€0.2 M
	Manufacturas Nicolas, S.L.	€111,839
	Amargos SLU	€72,639
	Madergold S.L.	€21,015

	Austria	€58.6 M
	Genol GmbH & Co KG	€7,900,000
	Drauholz GmbH	€7,400,000
	Papierholz Austria GmbH	€6,800,000
	Holzindustrie Schweighofer	€6,300,000
	Essmeister GmbH & Co KG	€4,800,000

	France	€3.7 M
	Active Trading S.A.	€2,000,000
	Gasconne Bois	€500,000
	PG Distribution SARL	€400,000

	Germany	€2.5 M
	Classen Holz Kontor GmbH	€700,000
	Klenk Holz AG	€400,000
	Bauhaus GmbH & Co KG	€400,000

	Italy	€4.1 M
	Pircher Oberland SpA	€2,500,000
	Genol GmbH & Co KG	€1,300,000
	Ecogest SRL	€100,000

	Slovenia	€10.0 M
	Drauholz GmbH	€4,400,000
	Genol GmbH & Co KG	€3,000,000
	Habersatter & Wieser Holzhandel OHG	€1,400,000

	Czech Republic	€4.6 M
	Klaus Timber PLC	€1,400,000
	Pilus spol s.r.o.	€1,100,000
	Demos Trade	€600,000

	Bulgaria	€5.1 M
	MOMA LTD	€1,400,000
	Bulles Group LTD	€1,100,000
	Ecotrade Bulgaria LTD	€1,000,000

Country totals

	Austria	€58,630,000
	Slovenia	€9,980,000
	Bulgaria	€5,100,000
	Czech Republic	€4,580,000
	Italy	€4,090,000
	France	€3,670,000
	Hungary	€2,960,000
	Greece	€2,810,000
	Germany	€2,490,000
	Slovakia	€1,760,000
	Switzerland	€570,000
	Poland	€470,000
	Sweden	€460,000
	Portugal	€360,000
	Netherlands	€330,000
	Croatia	€330,000
	Spain	€230,000
	Belgium	€180,000
	United Kingdom	€160,000
	Cyprus	€20,000
	Estonia	€18,000
	Luxemburg	€2,000

no data

Policy for Association complaint by WWF Germany against Holzindustrie Schweighofer

14 October 2016

Recommendation to the FSC Board of Directors

Impartial Complaints Panel consisting of Leo van der Vlist, Heiko Liedeker & Bert van Hensbergen

FSC shall disassociate from Holzindustrie Schweighofer and all companies controlled by Gerald Schweighofer.

FSC 2016

Romanian police raid HS HQ, May 30, 2018

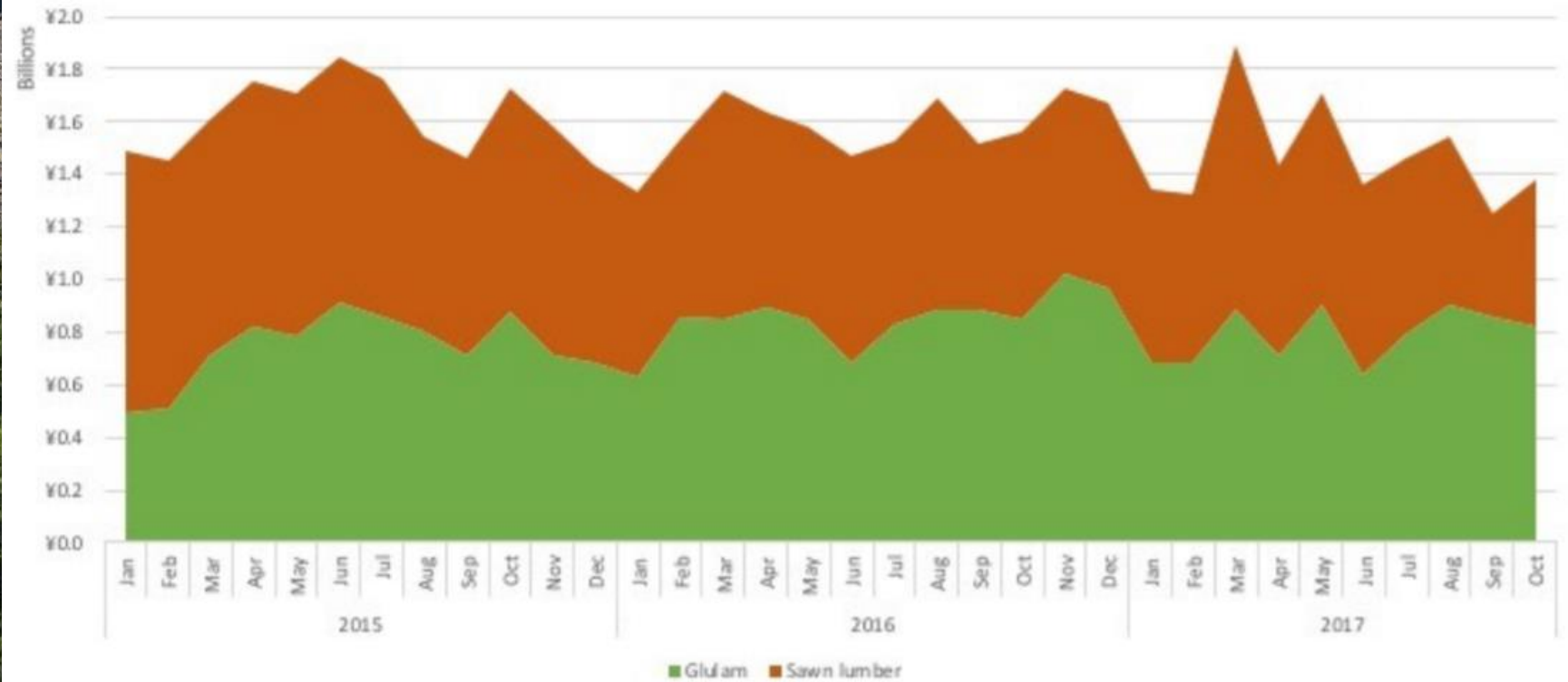


BUILT ON LIES

NEW HOMES IN JAPAN DESTROY
OLD FORESTS IN EUROPE

Sales to Japan

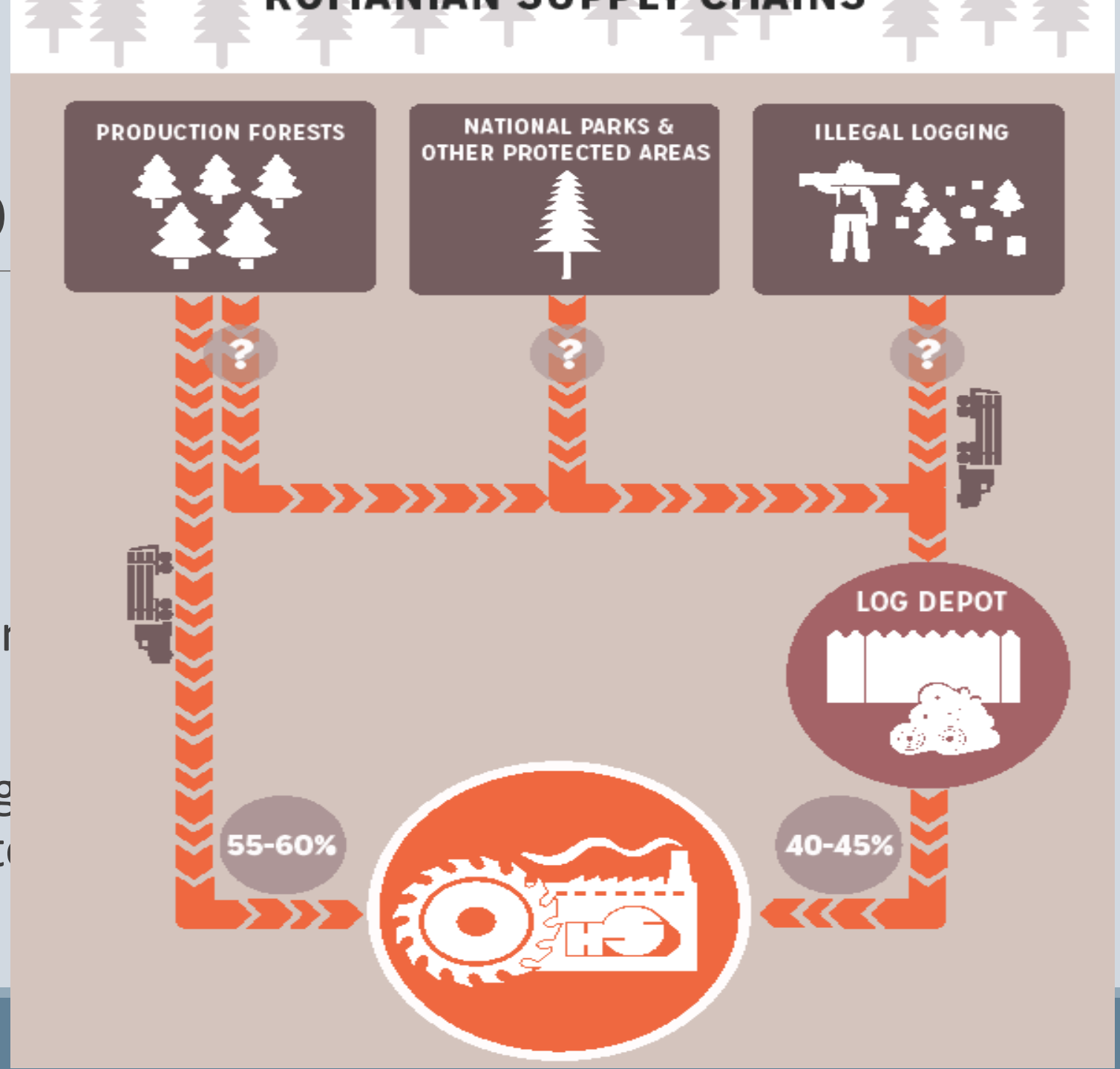
Table 1: SCHWEIGHOFER EXPORTS FROM ROMANIA TO JAPAN FROM 2015 TO 2017



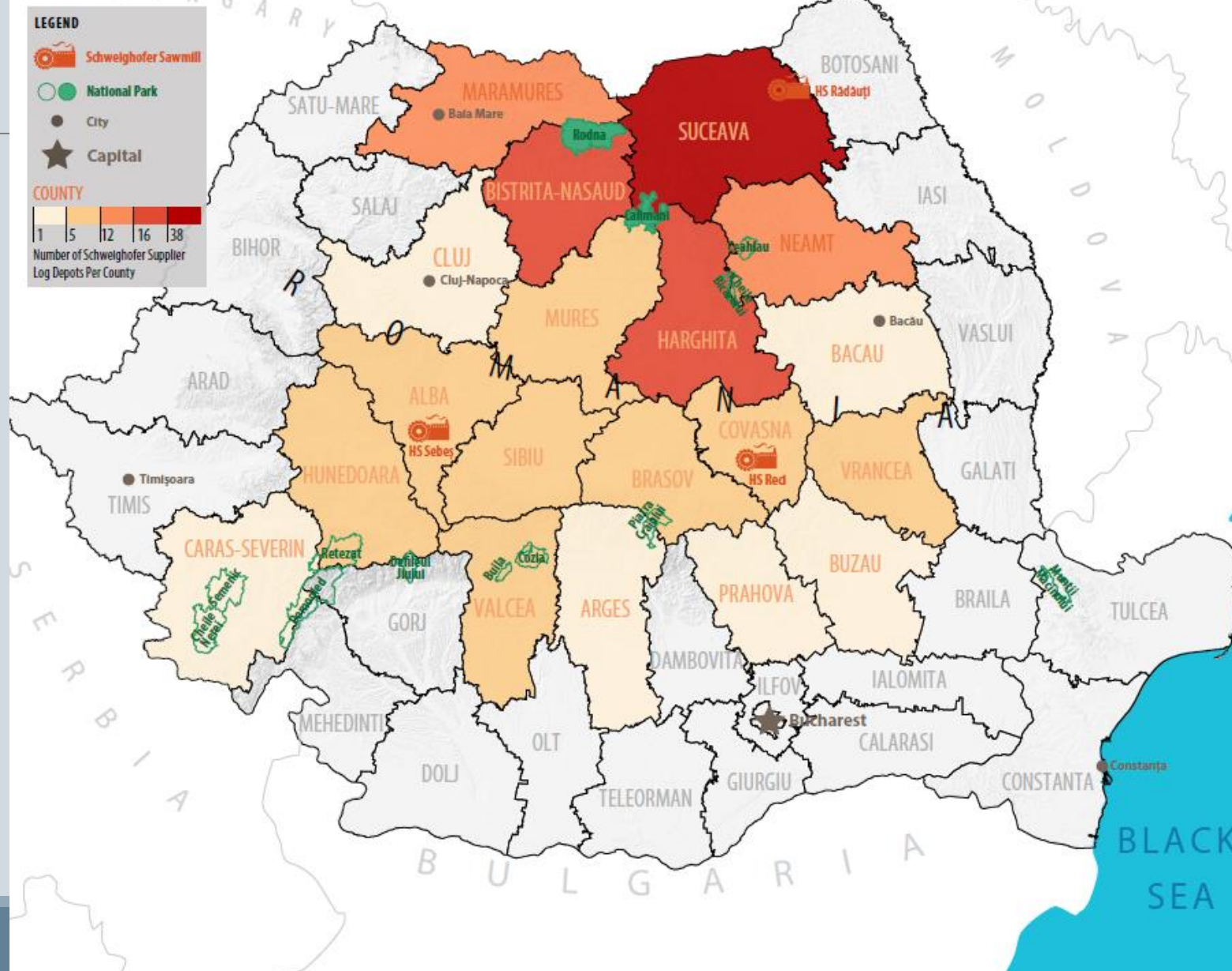
Log Yards (Dep

Schweighofer sourcing:

- From Romania:
 - 2013 – 2.3 million m³
 - 2017 – 1.2 million m³
- 2017 imports: 1.6 million
- → only ~20% of Schweighofer tracked with its GPS system



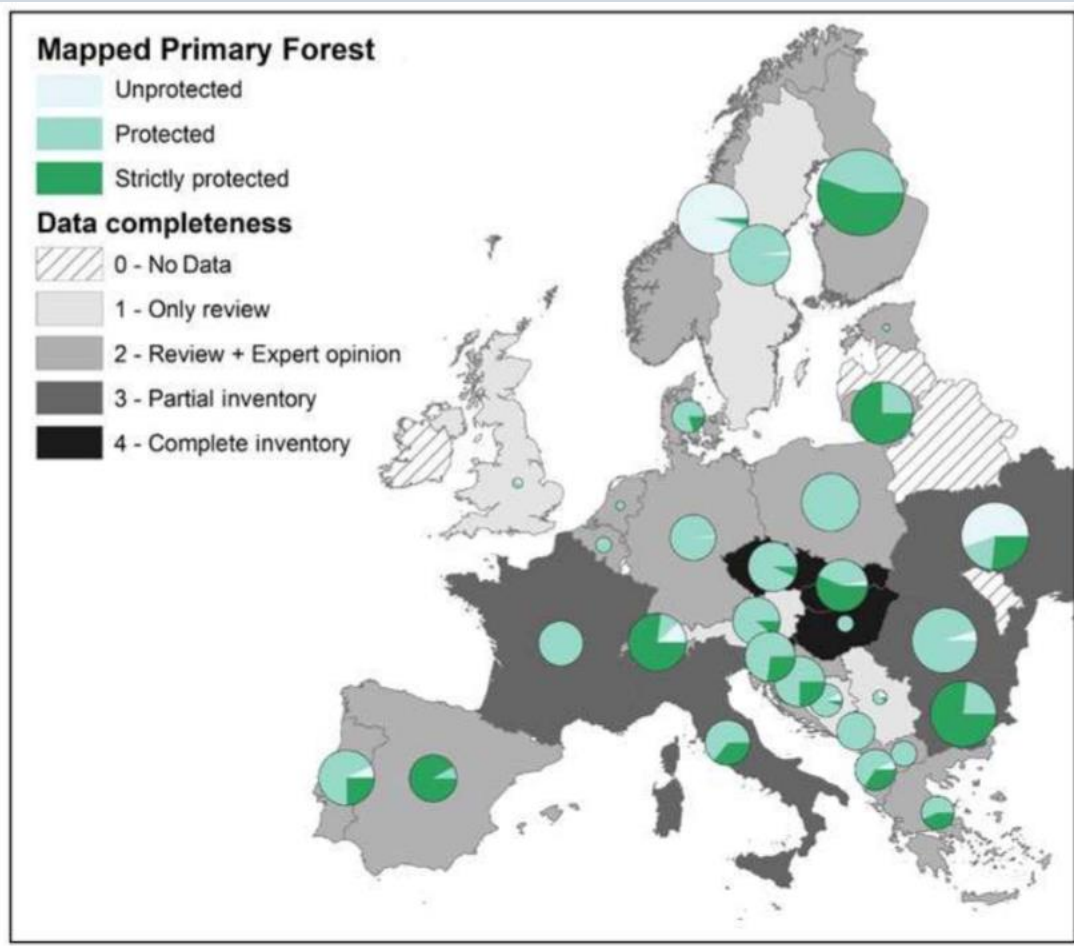
Location of Schweighofer Supplier Depots



Schweighofer sourcing:

- From Romania:
 - 2013 – 2.3 million m³
 - 2017 – 1.2 million m³
- But – 2017:
 - 1.6 million m³ in imports (Belarus, Slovakia, Ukraine, etc)





Implications for Old Growth Forests

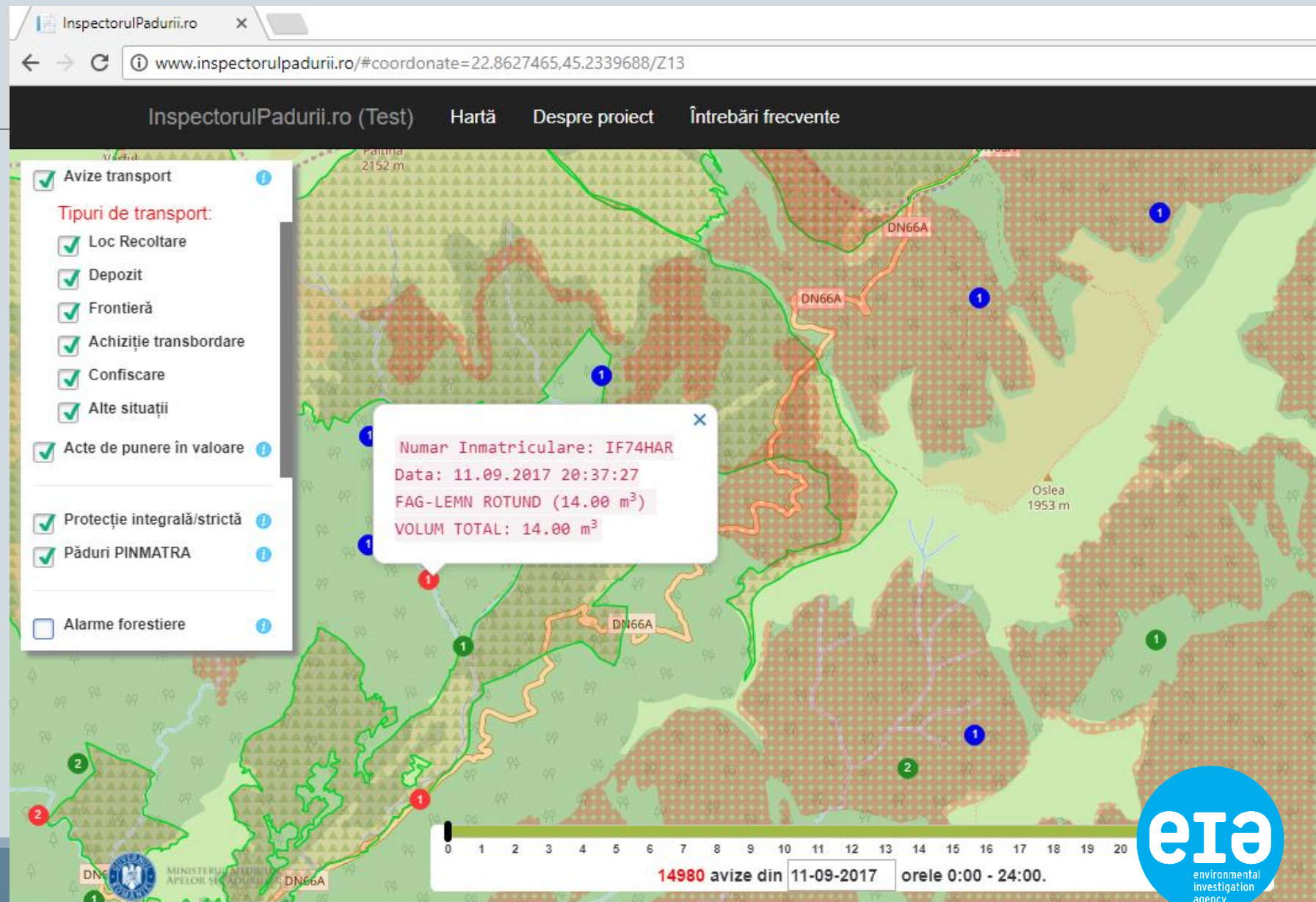


Photo: Matthias Schickhofer

- Last Old Growth Forests in Europe are under serious threat
- Patchwork of Old Growth Forests, often in close proximity to production forests

Romanian Government Response

- New Forest Code
- Forest Guard:
Increased funding
and restructuring
- **Forest Inspector**
 - App
 - Website:
inspectorulpadurii.ro



Public access to information

Increasingly common for many commodities: soy, beef, palm oil, coffee, timber – fruit and vegetables in EU

Key public information required, linked:

- Forest management plans
- Harvesting authorizations
- Transport – linked between multiple stages

Company confidential information – can be avoided



Photo: Ecostorm

Lessons from Romania: Transparency is possible, and needed



Photo: Alex Gavan