



GTTN

Global Timber
Tracking Network

Forest Legality Week, Washington D.C., USA
2017 October 17-19

jo.vanbrusselen@efi.int
www.globaltimbertrackingnetwork.org



Presentation outline

- GTTN in a nutshell
- Seeking a holistic approach to timber tracking
- GTTN Key objectives in phase II
- GTTN with and for the stakeholders
- Project tasks
 - *International standards*
 - *Service portfolio and lab-finder*
 - *[Meta-]database of reference data*
 - *Communication, networking and outreach*
- Expertise represented in the network
- Reasons to join GTTN



GTTN mission

The objective of the Global Timber Tracking Network (GTTN) is to **promote the operationalization of innovative tools to verify trade claims of wood-based products.**

GTTN **assists the fight against illegal logging and related trade**, in support of the work of e.g. law enforcement agencies, eNGO's, (ref. EUTR) Monitoring Organisations, or to assist operators' own due diligence systems, e.g. as integrated part of chain of custody tracking.

Say what?

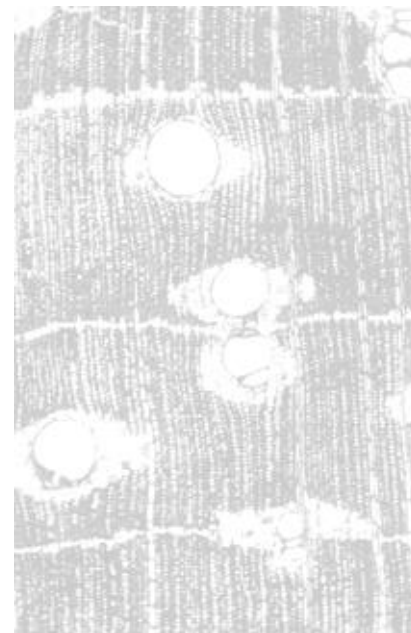


- Verification of timber species and/or timber geographical origin can unambiguously confirm or reject a trade claim ref. **FLEG-T**, e.g.
 - Intentionally false trade claim: wrong species; wrong origin or both
 - Unintentionally false trade claim / sloppy DDS e.g. When a common wood trade name is incorrectly linked to a particular tree species (common name can refer to multiple species); mistranslation etc.
- Can support legality & **sustainability certification**
 - E.g. Verify wood originates indeed from a certain FSC or PEFC certified area



Seeking a holistic approach to timber tracking

- ✓ DNA fingerprinting
- ✓ Mass spectrometry
- ✓ NIR
- ✓ Stable isotope analysis
- ✓ Wood anatomy, machine vision



- Combination of methods could cost-effectively increase accuracy
- We promote sampling for reference data creation to serve all methods



Global tasks

1. International standards

2.A. Service portfolio and lab-finder

2.B. [Meta-]database of reference data

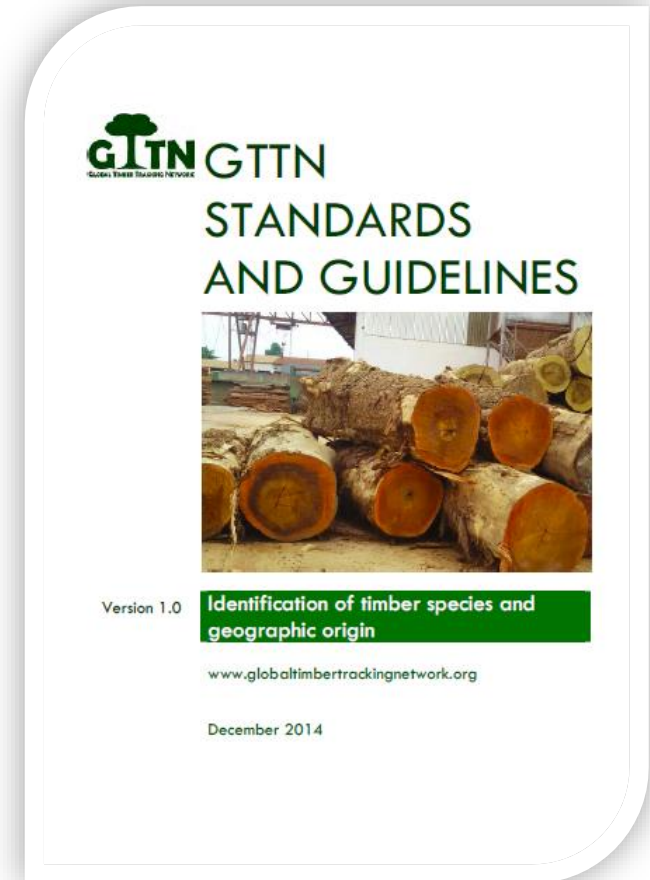
3. Communication, networking, outreach, advocacy

International standards



Contribute to international standard setting on:

- Sampling
- Material storage
- Material exchange
- Methods for tests on tree species and geographic origin of timber
- Organisation of ringtests, blind tests
- Applicable regulation



Service portfolio and lab-finder



- Develop a laboratory and expert finder



- Develop guidance on best available method
 - Depending on the product
 - Depending on the claim of species and geographic origin
-
- Depending on the location of the customer
 - For External users:
 - e.g. FB-I, monitoring organisations, enforcement and other public authorities



[Meta-]database of reference data

For internal users: participating laboratories

Furthering the Phase I database

- (geo-referenced) DNA
- stable isotope data
- wood anatomy catalogues
- mass spectrometric data
- Other?

Data repository centre:

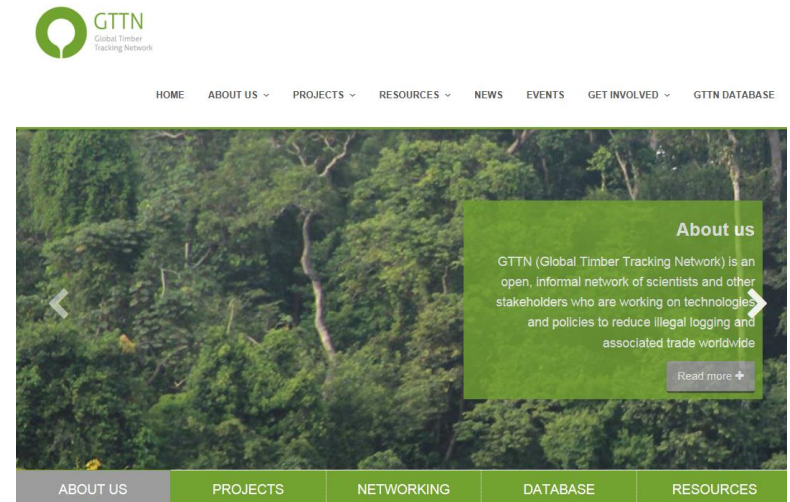
- Metadata in One location
- Data in distributed databases
- Secure data entry and storage protocols
- Differentiated access levels

Communication, networking, outreach



Effective communication truly relies on contributions from all partners in the network. It's give and take.

- GTTN on-line : www.globaltimbertrackingnetwork.org
- GTTN news, guidelines and other PR
- WG and regional meetings
- Promotion of GTTN Associated Event





Advocacy

- Memorandum of Understanding
- Protocols for reference data sharing (IPR, ABS)
- Priority species list –revisited
- Research agenda development
- Assessing market for GTTN services
- Facilitating market access/development for GTTN services
- Advocate for funding and coordination between donors
 - e.g. Sampling campaigns, advanced dbasedevelopment etc.

GTTN with and for the stakeholders



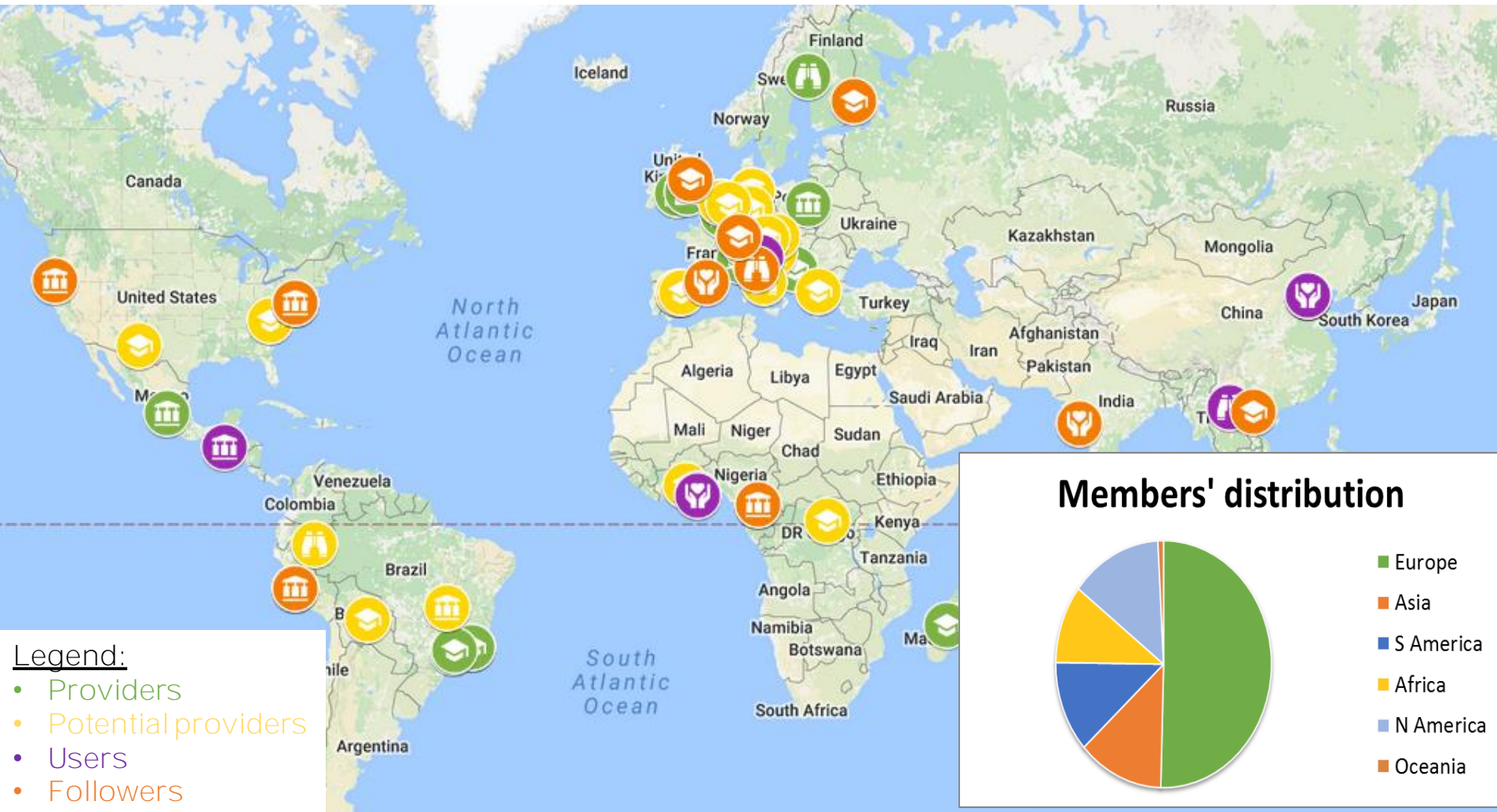
GTTN is intended as a **global platform** bringing together scientists, policy makers and other key players

GTTN is an **open alliance** that cooperates along a joint vision and the network activities are financed through an open multi-donor approach.



Participate in a growing global network

Status of 20170901. The network remains open for registrations: for developers, providers and users of timber tracking, but also for other interested stakeholders.



Being part of GTTN

”What’s in it for us?”



Researchers and timber tracking service supply side:

- Make your work more visible via events, website, publications
- Broaden your network, possibility to synergize your efforts
- Standardization requires broad consensus
- Access to reference data helps diversify your service portfolio
- International engagement helps you raising your lab’s profile
- Jointly create opportunities for new projects (funding!)

Being part of GTTN

”What’s in it for us?”








Practitioners, the demand side:

- Increase certainty in due diligence systems | law enforcement
- Be at the forefront of novel methods design
- Take advantage of being an early adopter
- We like to help communicating your success stories!
- Influence prioritisation of systems development, eg. species focus
- Influence development of GTTN services to meet your demand
- Your engagement will be visible through GTTN communications



Discover the GTTN network

Disclaimer Contact us     



Organisation Providers Users Products News Events



JOIN

WORKING GROUPS MEETINGS

19-20 Oct 2017 Washington D.C.

REGISTER

www.globaltimbertrackingnetwork.org



GTTN

Global Timber
Tracking Network

With support from



Federal Ministry
of Food
and Agriculture

by decision of the
German Bundestag

The objective of the Global Timber Tracking Network (GTTN) is to promote the operationalization of innovative tools for wood identification and origin determination, to assist the fight against illegal logging and related trade around the globe.

GTTN is an open alliance that cooperates along a joint vision and the network activities are financed through an open multi-donor approach. GTTN phase 2 coordination (2017-2019) is financed by the German Federal Ministry of Food and Agriculture (BMEL).