

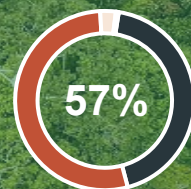
Forest Legality Week 2022

Use of the selective logging algorithm to support OSINFOR's forest supervisions

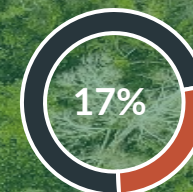
NATIONAL CONTEXT



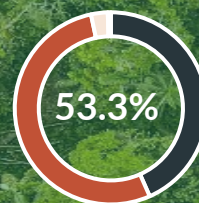
128.5 million ha
National territory



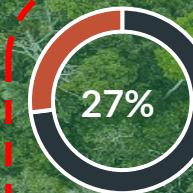
72.8 million ha
Total area of national forests



12.7 million ha
Native communities area



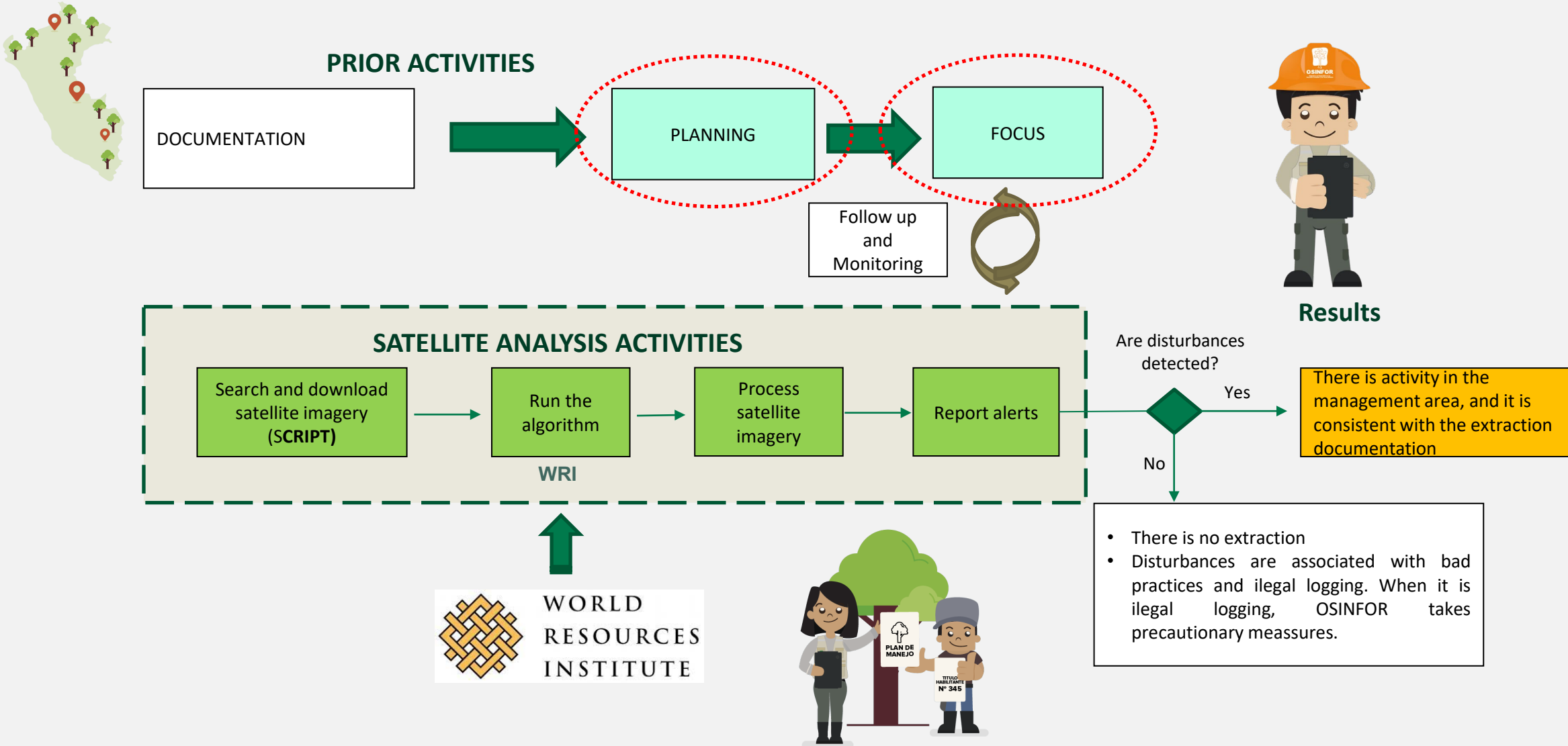
68.5 million ha
Amazon humid forest



34.7 milion ha
Potential área for OSINFOR
supervision activities

"Our forests are our most important renewable capital; Peru is the 2° country with the largest forest extent in Latin America, after Brazil, and the 9° in the world"

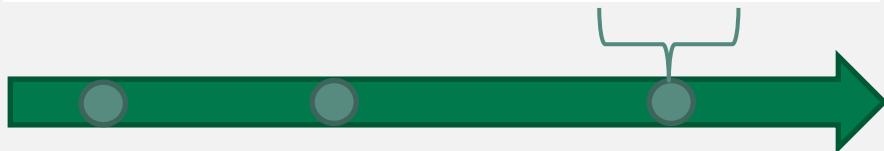
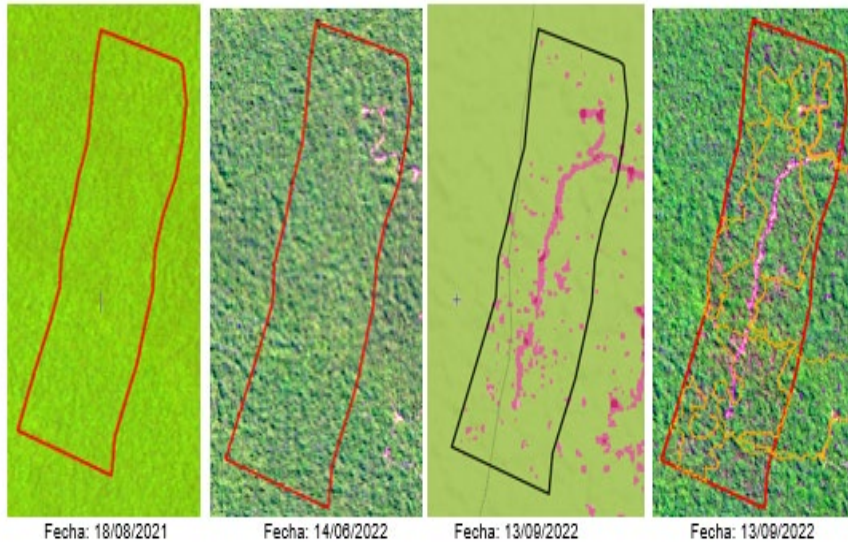
USE OF THE ALGORITHM IN THE SUPERVISION PROCESS



EXAMPLE OF THE APPLICATION OF THE SELECTIVE LOGGING ALGORITHM

Detecting disturbances consistent with logging activities in more than 29,000 ha

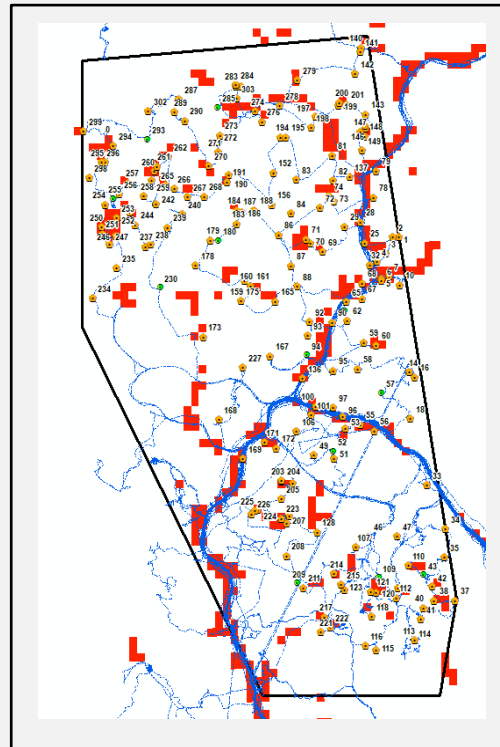
Duración del título habilitante	01 año	Fecha de inicio	20/06/2021
		Fecha de finalización	19/06/2022



Before
surveillance

Supervision and
selective logging
match

Logging alert and
establishment of
roads after the
validity of the
enabling title



- Forest roads
- Logging (with 50% of probability of detection 50%)
- Forest cover loss (mining, deforestation, others).



EXAMPLE OF THE APPLICATION OF THE SELECTIVE LOGGING ALGORITHM

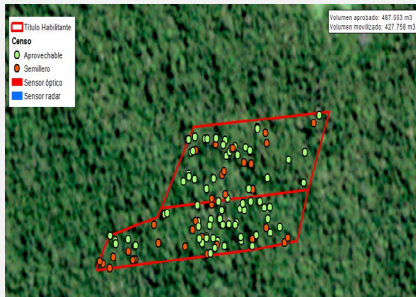
Activation of Forest alerts in more than 1.5 thousand ha



At the beginning of the validity of the enabling title



During the monitoring of the enabling title



Analysis using the selective logging algorithm

Nº	16-LOR-CONPER-FMP 2021-053	Vol. (RJ Nº 240-2021)	Saldo	GTF Nº 002 14/03/22	GTF Nº 006 14/03/22	GTF Nº 007 14/03/22	GTF Nº 008 15/03/22	Total
1	CAIMITILLO	0.000	0.000					0.000
2	COPAIBA	44.418	0.414	40.166			3.838	44.004
3	COTO CALLANA	0.000	0.000					0.000
4	ESTORAQUE	25.855	11.769	3.375		10.711		14.086
5	HUAI A IA	0.000	0.000					0.000
6	HUAYRURU	0.000	0.000					0.000
7	HUIMBA	30.347	0.133	29.685			0.529	30.214
8	LUPUNA	65.501	0.616		64.885			64.885
9	MACHIMANGO	48.092	0.818			47.874		47.874
10	MANCHINGA	108.182	0.886	100.352			5.142	105.494
11	MASHONASTE	43.177	0.766	21.674			20.737	42.411
12	OCHABAJA	0.000	0.000					0.000
13	PALISANGRE	34.595	34.595					0.000
14	PASHACO	7.582	0.994	4.666			1.922	6.588
15	QUILLOBORDON	0.000	0.000					0.000
16	SAPITILLO	72.661	0.499	17.005		55.197		72.232
17	SHIHUAYLACO	0.000	0.000					0.000
18	TAHUARI	8.655	8.655					0.000
TOTAL		487.663	59.905	216.923	64.885	113.782	32.168	427.758

Approved: 487 m³
Mobilized: 427 m³

Causes

- We did not identified disturbances in the management área; however, the reported volumes of mobilized timber do not match the results of the algorithm

Impact

- Helped detect more tan **1 millón bf of timber** of ilegal origin to activate 09 alerts to trigger the release of preventive measures



OSINFOR alerts: <https://observatorio.osinfor.gob.pe/AlertasOSINFOR>

LESSONS LEARNED

The algorithm performs better in high-scale management plans

Allows to identify logging with a 50% probability

Helps corroborate illegal activities

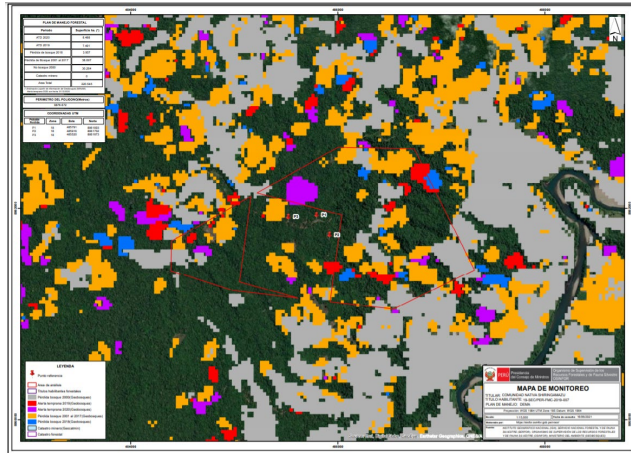
Helps prioritize supervisions to optimize resources

There are limitations in low-intensity logging



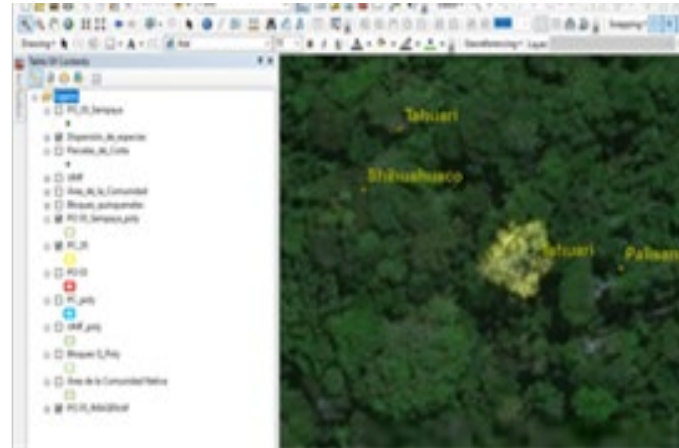
OPPORTUNITIES TO IMPROVE

Continue to validate the algorithm



Improve the detection of disturbances

Agreements & use of high-resolution satellite imagery



Assess the Forest potential (timber and non-timber)

Incorporate the algorithm to OSINFOR's systems (SISFOR)



Technology/capacity transfer to regional governments



Con el apoyo técnico de:



FOREST, programa de cooperación técnica
de USAID y el Servicio Forestal de los EEUU



¡Gracias!

Luis Enrique Campos Zumaeta
Especialista Forestal DSFFS
lcampos@osinfor.gob.pe



gob.pe/osinfor