



Global Forest Watch

Advancements in
forest monitoring data

Liz Goldman, Senior GIS Research Manager
egoldman@wri.org

GLAD alerts on GFW



LEGEND **ANALYSIS**

Integrated deforestation alerts

- Detected by a single alert system
- High confidence: detected more than once by a single alert system
- Highest confidence: detected by multiple alert systems

Integrated deforestation alerts
Integrated layer of GLAD-L/GLAD-S2/RADD. Data from UMD and WUR. GLAD-L alerts resampled from 30m to 10m.

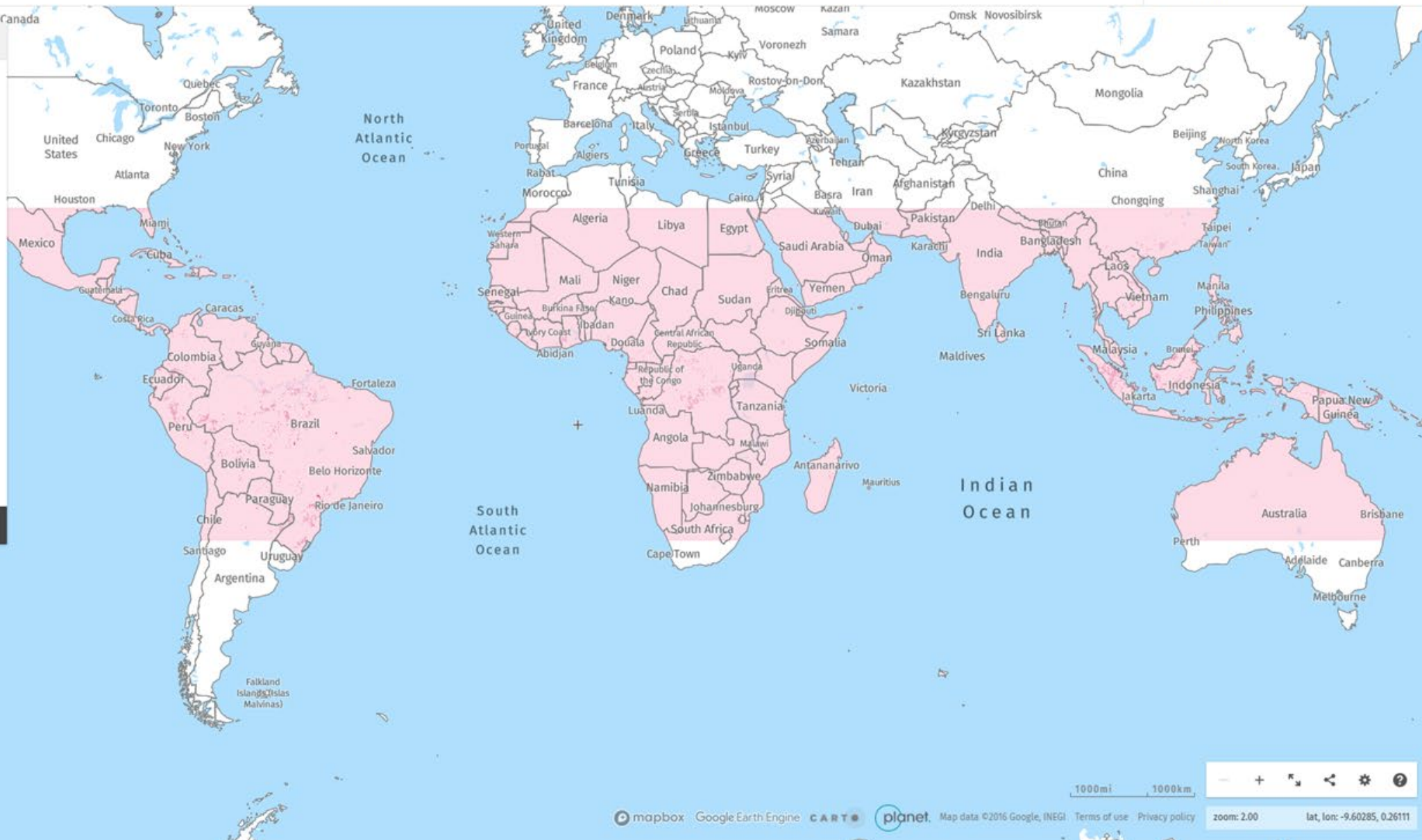
From **12 APR 2021** to **13 OCT 2022**

2020-10-13 2021-10-13 2022-10-13

Show only high and highest confidence alerts

Geographic coverage

PLANET SATELLITE IMAGERY (TROPICS)



LEGEND **ANALYSIS**

Tree cover loss by dominant driver - 2001-2019

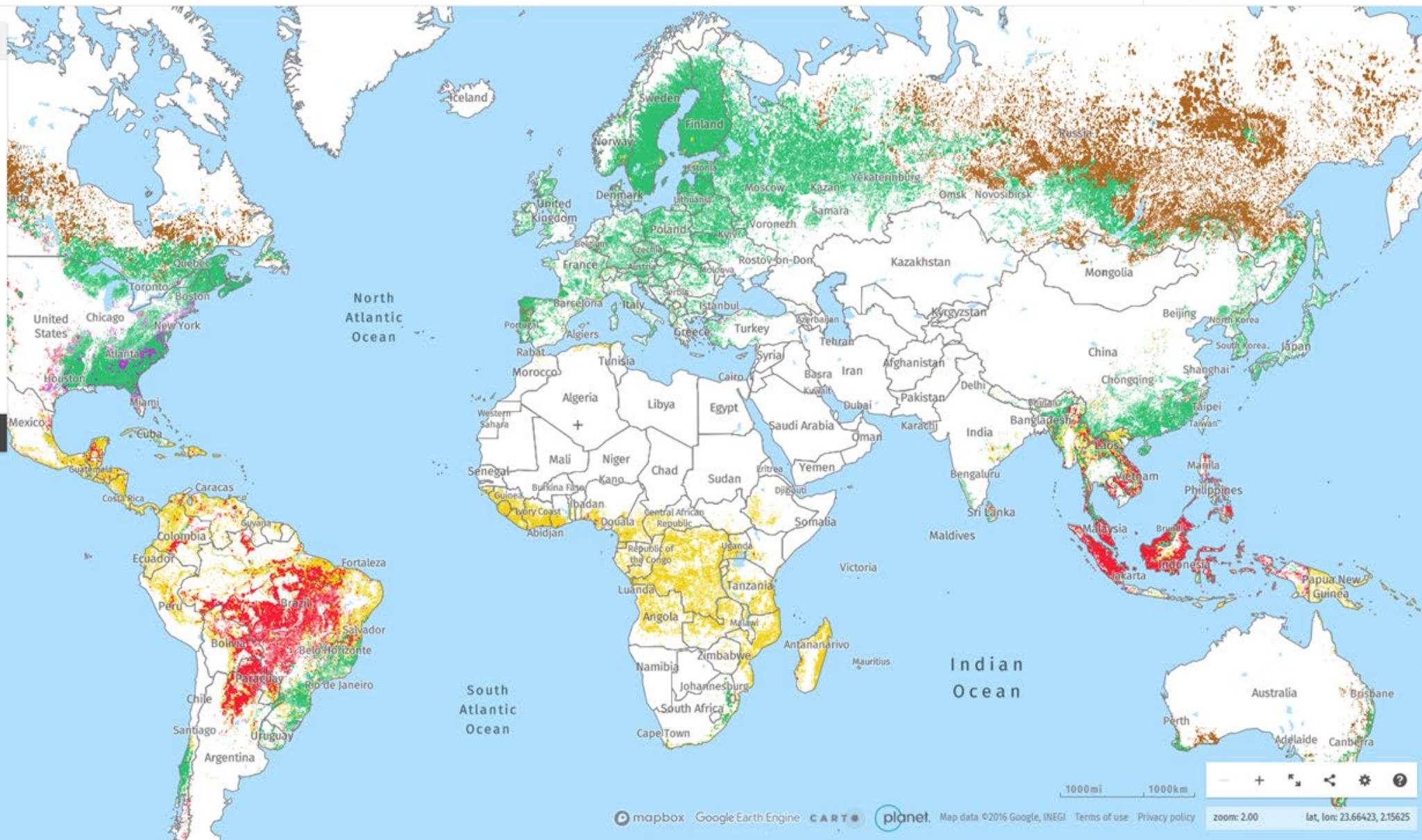
- Commodity driven deforestation
- Shifting agriculture
- Forestry
- Wildfire
- Urbanization

Displaying Tree cover loss by dominant driver with > 30% canopy density

2001 2004 2007 2010 2013 2016 2019

Hover for details on drivers classes.

PLANET SATELLITE IMAGERY (TROPICS)



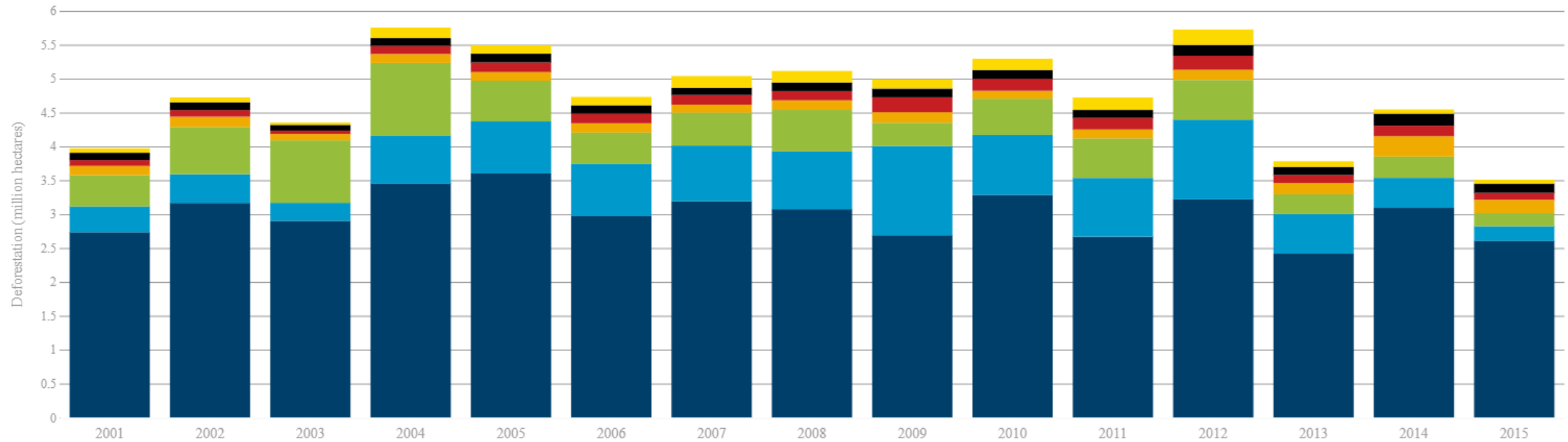
1000mi 1000km

mapbox Google Earth Engine CARTO planet Map data ©2016 Google, INEGI Terms of use Privacy policy zoom: 2.00 lat, lon: 23.66423, 2.15625

All analyzed commodities explain 57 percent of tree cover loss from agriculture; cattle alone explains 36 percent

Forest area replaced by analyzed commodities

■ Cattle ■ Oil Palm ■ Soy ■ Cocoa ■ Rubber ■ Coffee ■ Wood fiber



State of crop data for monitoring deforestation free supply chains

