

Traceability and geolocation - Digital Public Infrastructure (DPI) -

An aerial photograph of a forest, likely a plantation, with a semi-transparent grid overlay. A small white crosshair is positioned in the center of the grid. The grid lines are light pink or reddish, and the forest below is a dense green. The grid appears to be used for geolocation or mapping purposes.

Lars Kahnert, DIASCA/GIZ

Forest Governance and
Policy Conference 2024
30 April 2024

Digital Challenges?

Digital becomes mandatory

Lack of **access** to digital solutions

Fragmented digital market

Lack of **standard approaches**

Lack of **data sovereignty**

Additional burden instead of benefit

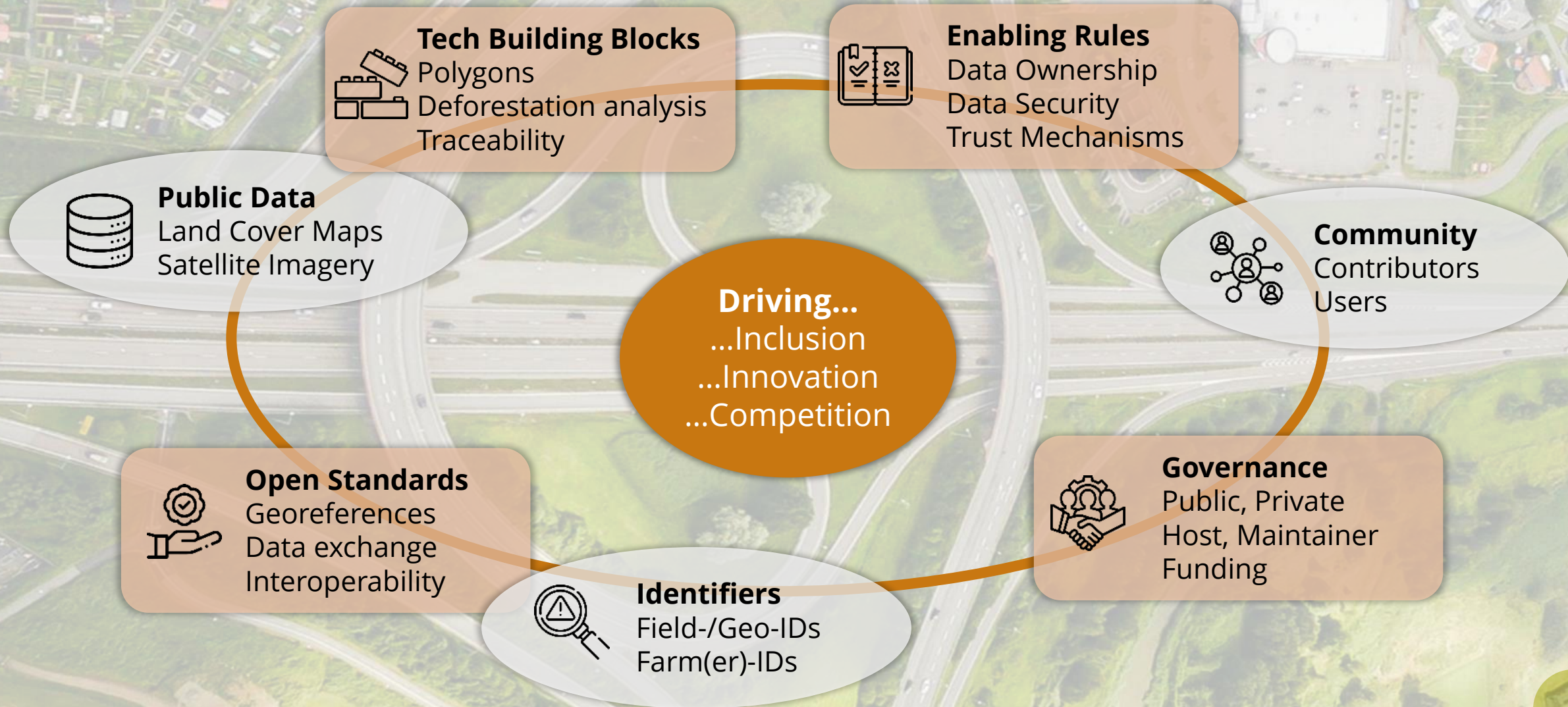
Economic & digital **dependencies**

Risk of Exclusion: Farmers, Regions, Countries



Heading towards compliance....
...yet: Everyone is building their own railway track
....and their own trains!

- ? Accessibility
- ? Cost / Reusability
- ? Maintainability
- ? Interoperability / Standardization
- ? Trust (Neutrality, Security)
- ? Quality



DIASCA - Objective

A broad agreement on globally accepted standards on

- **Traceability,**
- **Geospatial Data: forest monitoring** and
- **Entity-based Data: farm income,**

for efficient data flow and compliance within agricultural supply chains.



Support elaboration and deployment of technology building blocks and DPI



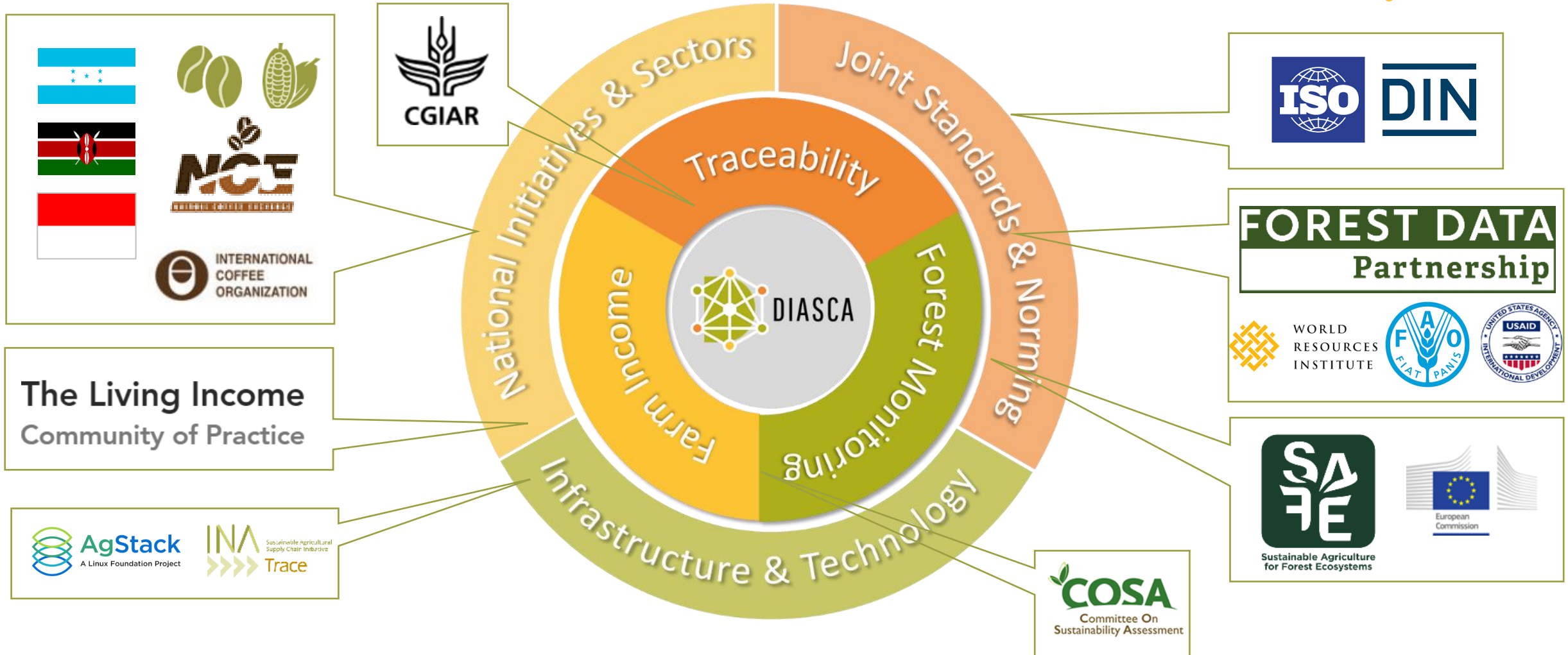
.....in an **open and inclusive** multi-stakeholder process



DIASCA

Digital Integration of Agricultural Supply Chains Alliance

Multi-Actor Community on Standards and DPI

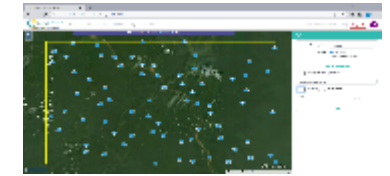


> 500 actors across sectors, countries

DPI Building Blocks



GEOID	TMF	GFC	GAEZ	PA	Alert	LCLU
'c288d6c94efa	10	30	1	yes	1000	Trees
'1a41a309ae2	9	30	1	no	200	Trees
'1a4472dc407	10	10	2	no	200	Agriculture
'8e2acce7dd	1	70	4	no	100	Bare



Boundaries

- From the field
- Next-Gen UI
- Polygon collection

Unique Geo-IDs

- Anonymous
- Attribute-less
- Open-source
- Transferable

Public geodata

- Land cover
- Deforestation
- Legal

Public library

- AI models
- Validation

Public Tools

- Traceability
- Forest Monitoring

Compliance support

- Standardized data
- Verification App





Geo-IDs: Asset Registry

<http://asset-registry.agstack.org>



Geoid: **ff93ad2470125dfe0f21b7b857140c94efa635c8b6f25104419e88129db9f682**



- The asset registry is developed by AgStack, under the LINUX foundation
- It is a free, open source, public registry to create and maintain ubiquitous, geo-intelligent unique “public geoIDs” for field boundaries without requiring any other attribution
- geoIDs are anonymous, addressable but not discoverable



What is in that plot? Whisp principles

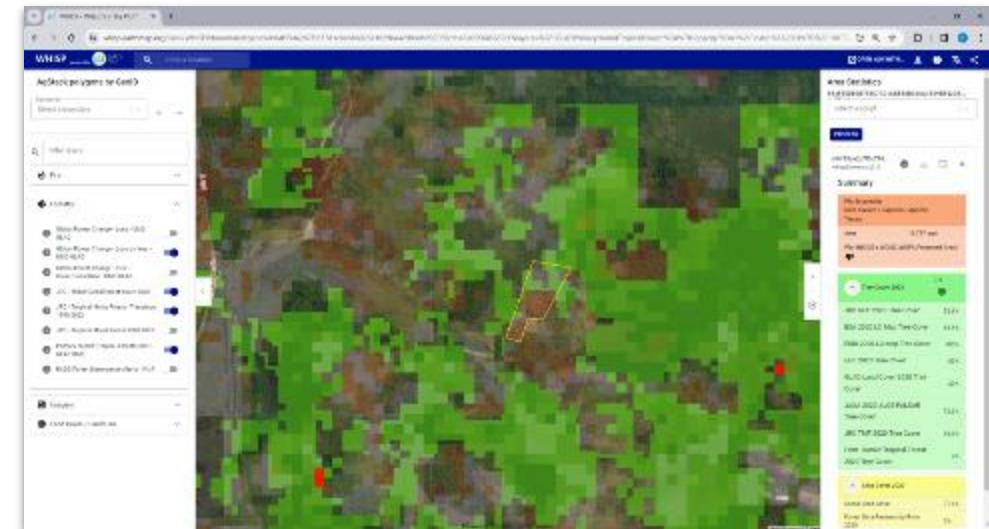


Whisp

- No single geospatial layer of information can prove compliance
- Convergence of evidence from multiple layers can support compliance claims
- National circumstances need to be taken into account
- Robust, transparent and reproducible analysis requires public datasets and processes

<https://whisp.earthmap.org/>

<https://github.com/forestdatapartnership/whisp>



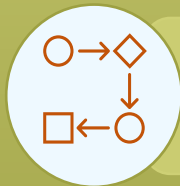
INATrace – a tool for traceability



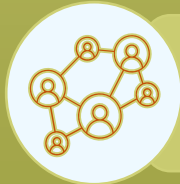
.....is an **open-source traceability solution**



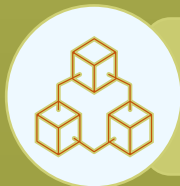
...has been developed **with the users**, especially **women**



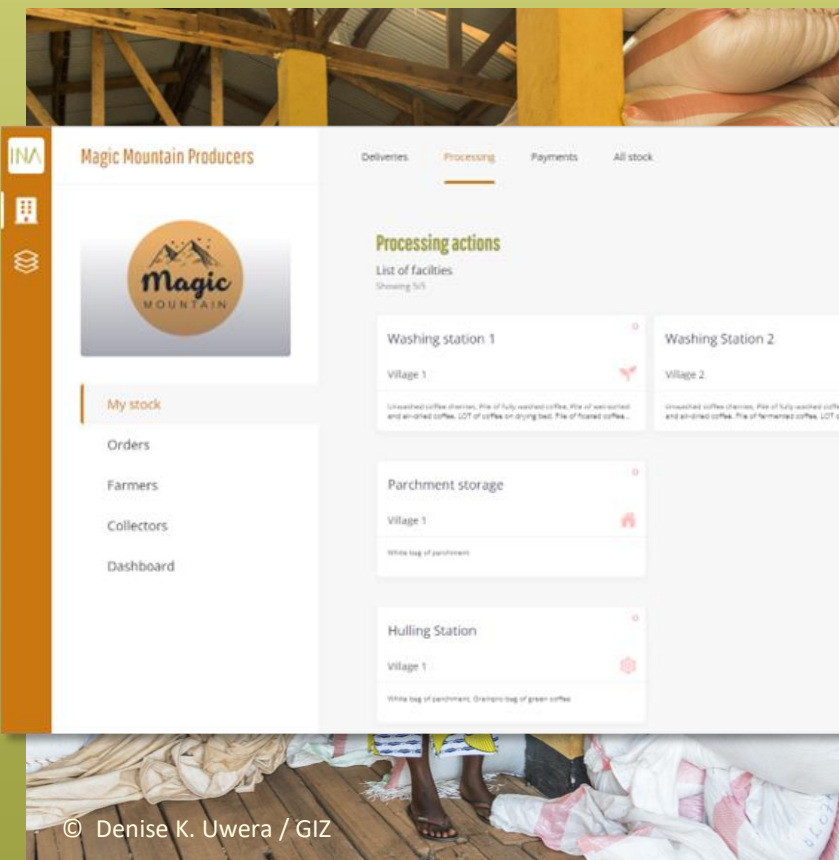
...maps **all process steps and transactions**, from the cooperative to the end product



...is adaptable, transferable and scalable.



... is based on **blockchain technology**.



Convergence of DPI open source building blocks



INA Sustainable Agricultural Supply Chain Initiative Trace

< Back View plots

List view Map view

+ New plot

< Back View plots

List view Map view

Summary

Coffee 1 plot/s, 129.88 ha total area

Plots

Home	
Crop	Coffee
Number of plants	0
Area	129.88 ha
Geo-ID	3f0a3bcb401764db3193975cc3ae2e231324888408aa48dbcc825fc7fa9e155b
Certification	

AgStack A Linux Foundation Project

Dashboard Logout

```
data: {
  GEO Id :
    "3f0a3bcb401764db3193975cc3ae2e231324888408aa48dbcc825fc7fa9e155b"
  Geo Data : NULL
  Geo JSON : {
    geometry : {
      type : "Polygon"
      coordinates : [
        [
          [
            7.68583, 50.35125,
            7.68583, 50.35125,
            7.68583, 50.35125
          ]
        ]
      ]
    }
  }
}
```

Whisp powered by EARTH MAP

Find location/enter coordinates

Select boundary or draw polygon

Plot 1 : 3f0a3bcb401764db3193975cc3ae2e231324888408aa48dbcc825fc7fa9e155b

Filter layers

- Agriculture
- Forestry
- Imagery

Legend

- WorldCover 10m 2020/2021 (ESA)
- Trees
- Shrubland
- Grassland
- Cropland
- Built-up
- Snow and ice
- Open water
- Herbaceous wetland
- Mangroves
- Oil palm (FDaP)
- JRC - EUDR Global forest cover 2020



Governance: DPI in the making



CONSENSUS ON MAINSTREAMING DIGITAL INTEGRATION OF THE COFFEE VALUE CHAIN IN KENYA FOR ENHANCED TRACEABILITY & SUSTAINABILITY

Key Consensus Areas at the Roundtable Workshop held at Kyaka Hotel, Machakos on 25th and 26th January, 2024

Following the roundtable meeting, held at Kyaka Hotel, Machakos on 25th and 26th January, 2024, we the undersigned stakeholders wish to confirm that we reached consensus on the following issues relating to mainstreaming digital integration of the coffee value chain for enhanced traceability and sustainability:

1. Data Management

a) Interoperability

- It was agreed that there is a need to have value chain actors interconnected for digital integration.
- There is a need to use basic systems to support interoperability.
- There is a need to have basic ICT infrastructure to support interoperability.
- Have in place a central point where data can be uploaded, validated and when necessary edited.

b) Standardisation of templates for information capture:

Declaración

"Reconocemos la necesidad de adoptar un modelo de gobernanza colaborativa para la Infraestructura Digital de Interés Público (IDIP) en el sector cafetalero, que integre de manera equitativa las visiones y esfuerzos del sector público y del privado. Este enfoque asegurará que la IDIP se desarrolle y opere bajo un marco de cooperación, innovación y responsabilidad compartida, maximizando así los beneficios para todos los actores de la cadena de valor del café. La colaboración público-privada es esencial para abordar eficazmente los retos complejos del sector, promover el cumplimiento normativo, y garantizar la sostenibilidad y la inclusión en el ámbito digital."



lars.kahnert@giz.de

nachhaltige-agrarlieferketten.org



<http://diasca.org>

Join us at diasca.org

Im Auftrag des:



Bundesministerium für
wirtschaftliche Zusammenarbeit
und Entwicklung

Durchgeführt von:

giz Deutsche Gesellschaft
für Internationale
Zusammenarbeit (GIZ) GmbH

INA Initiative für nachhaltige
Agrarlieferketten

Credits

https://www.flaticon.com/free-icon/team_1283342

https://www.flaticon.com/free-icon/construction_852697

https://www.flaticon.com/free-icon/database_9542653

https://www.flaticon.com/free-icon/standard_5261174

https://www.flaticon.com/free-icon/identify_5360934

https://www.flaticon.com/free-icon/rules_2046915

https://www.flaticon.com/free-icon/communities_4350908